

## Home and Land Package “Summerset 335” Sandy View Drive, Bay Ridge Heights

- Main bedroom upstairs with ensuite, walk in robe plus full sized study
- 3 large bedrooms downstairs, powder rooms on both floors
- Open plan kitchen, dining and living area, plus a spacious family room
- Large, tiled front and rear decks, plus downstairs patio
- A stunning, spacious home, designed to maximise the ocean outlook
- High ceilings, quality fittings and finishes throughout

All this with our **Premier** inclusions, a complete turnkey home and land package, a beautiful Master built 335sqm home with incredible rural and bay views.

**Priced at \$599,900.** Purchase off the plan and choose your colours



call... 1300 118 066  
[www.tapscotthomes.com.au](http://www.tapscotthomes.com.au)

QBSA Licence - 725567



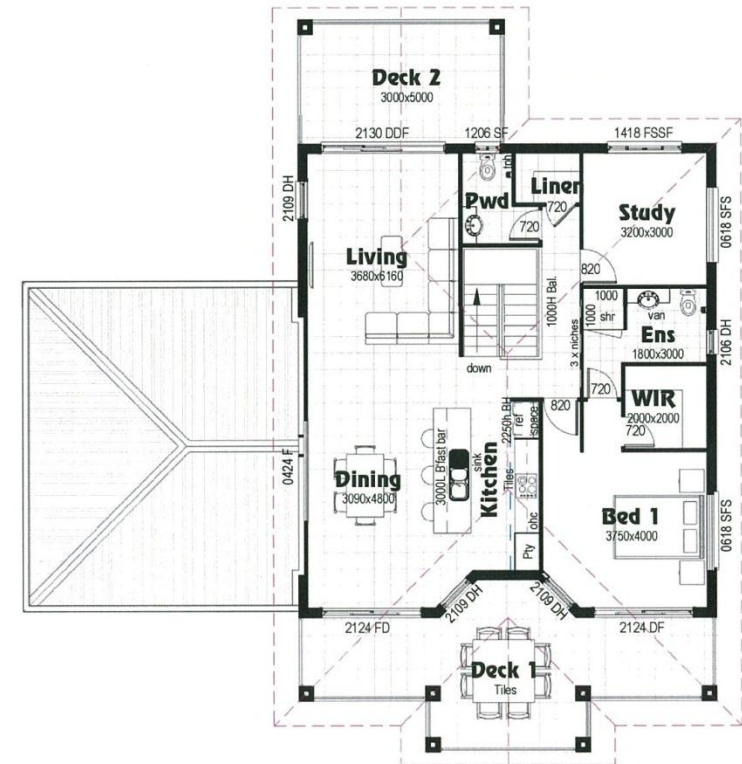
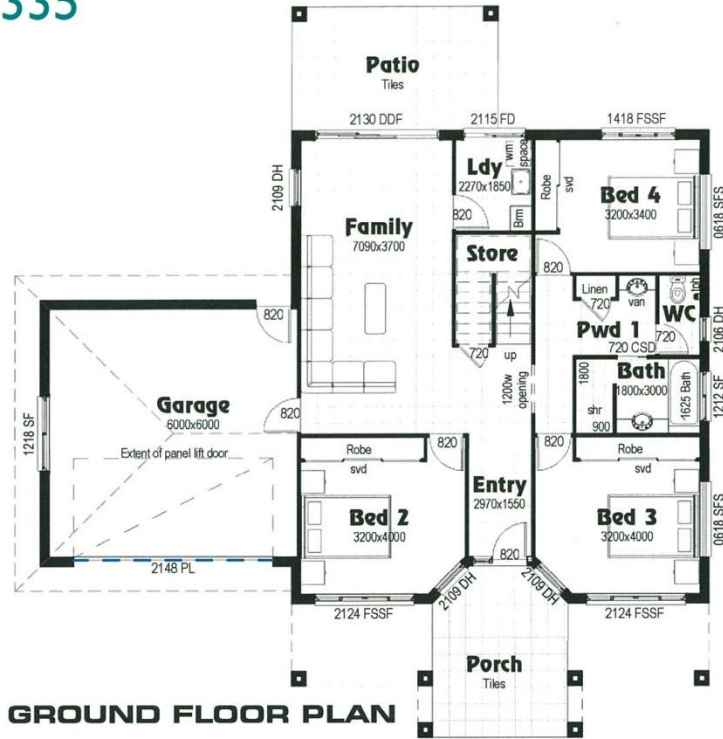
Your Home...Tailored to you



call... | 300 118 066  
[www.tapscotthomes.com.au](http://www.tapscotthomes.com.au)  
QBSA Licence - 725567

All information contained in this drawing is subject to Copyright 2010 Tapscott Homes. Brochure plans for illustration purposes only.

# Summerset 335



Your Home...Tailored to you



call... 1300 118 066  
www.tapscotthomes.com.au

QBSA Licence - 725567

All information contained in this drawing is subject to Copyright 2010 Tapscott Homes. Brochure plans for illustration purposes only.