

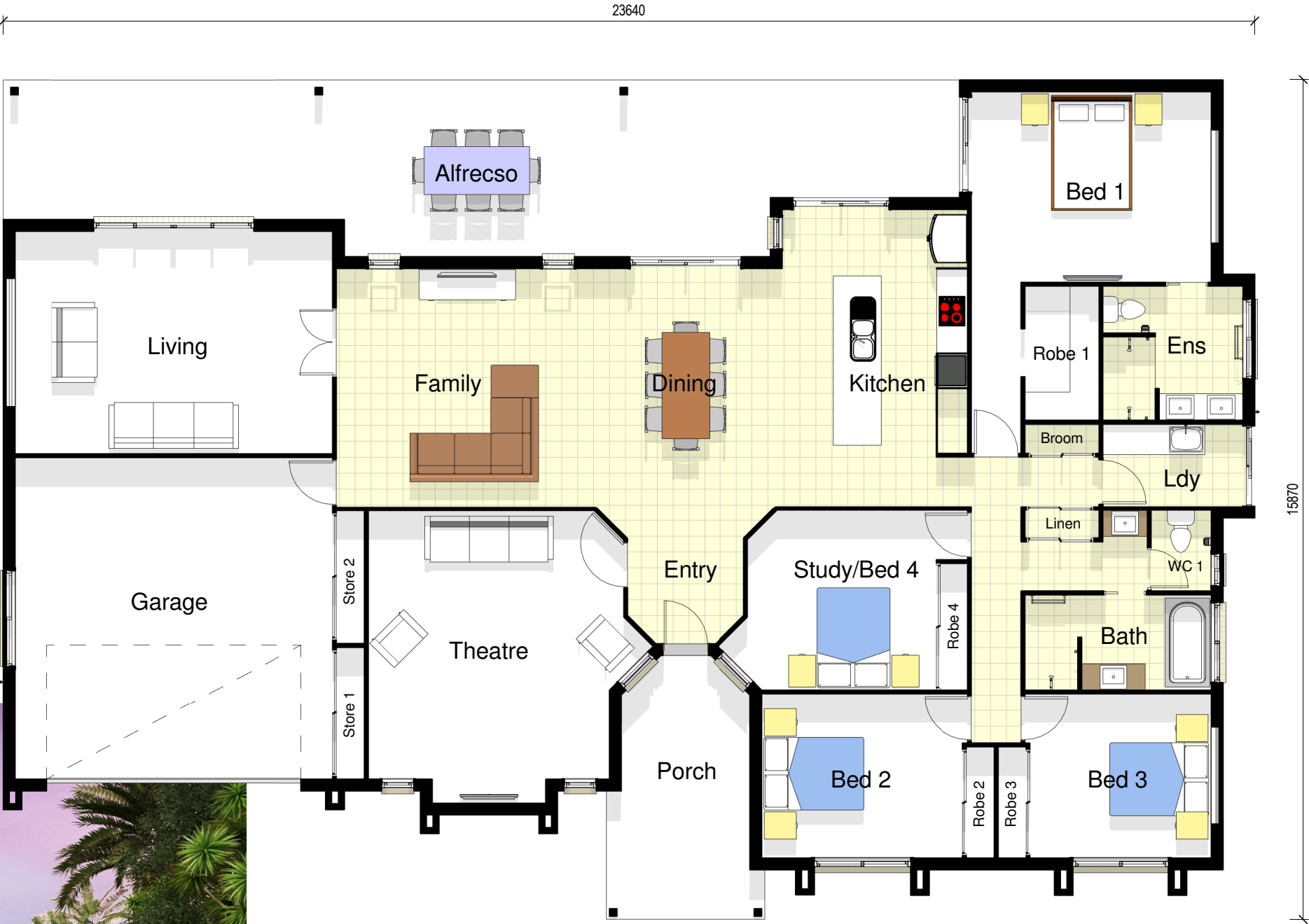
# Majestic

Ideal for a wider block, the bold contemporary design of Majestic showcases lake views or a grand coastal outlook.

Sumptuous living areas, with an open-plan family, dining and modern galley kitchen, features a glass back section so you and your guests can make the most of the vista. A separate theatre room will easily accommodate the largest family, or leave it to the kids while you entertain outside.

When it is time for peace and quiet, parents can retreat to the separate master bedroom to savour the outlook, away from the three other bedrooms. Generous walk-in wardrobes, ensuite with double vanities, and glass doors onto the alfresco spaces create a garden resort ambience.

A double garage with ample storage spaces means you'll never lack room for cars and the outdoor and hobby equipment that comes with an active Queensland lifestyle.



## ROOMS

Kitchen	4.6m x 3.5m
Dining	4.5m x 3.5m
Family	4.5m x 4.5m
Living	4.2m x 6.0m
Theatre	5.1m x 4.8m
Bed 1	3.6m x 4.5m
Bed 2	3.1m x 3.8m
Bed 3	3.1m x 3.5m
Bed 4/Study	3.4m x 3.6m
Garage	6.0m x 6.0m

## AREAS

House	226.40m²
Garage	42.90m²
Alfresco	51.80m²
Porch	12.60m²
TOTAL	333.70m²